



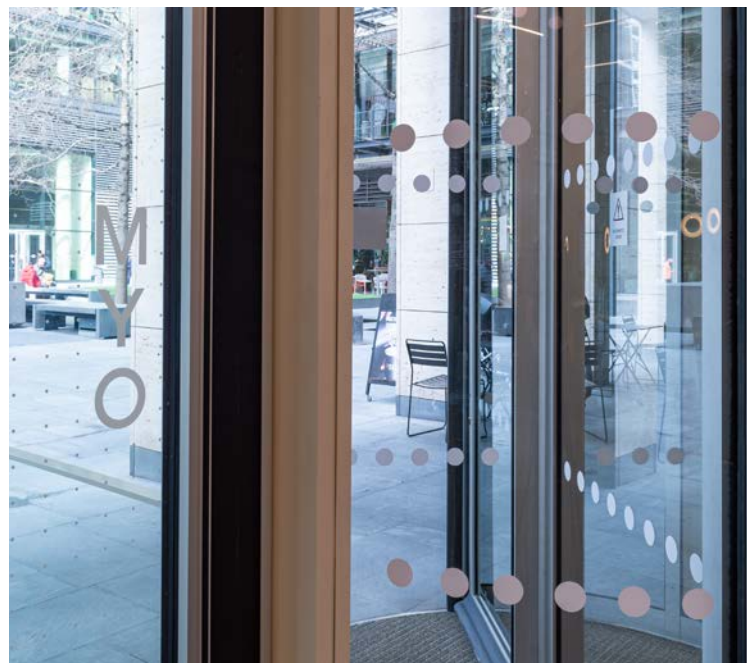
3 New Street Square, London

- Case Study

xsign provided an internal and external signage scheme at 3 New Street Square in Central London for the flexible working space specialists, MYO.

Located in the heart of Central London in Holborn, 3 New Street Square is a perfect city location for businesses looking for operational offices. We've provided a modern signage and wayfinding scheme to complement the outstanding design of the space.

Internally, we have provided 3mm thick iconography to key facilities, brushed stainless steel safety signage, aluminium wall mounted panel signs, plot cut glass manifestations on the revolving entrance door, white UV printed optically clear manifestations, and 4mm thick aluminium external lettering displaying the building name.





The external aluminium lettering features a ground and smoothed edge finish with face coating and a high grade painted finish.

Internal iconography provides wayfinding to key facilities. We've manufactured 3mm thick frosted lucite flat cut pictograms to provide a high end finish to the building.



Above private meeting rooms, we've provided a 5mm thick opal acrylic lightbox to offer an alternative, high end wayfinding solution.

4mm thick aluminium signage provides wayfinding for external facilities. The faces are coated with a high grade paint finish for longevity.



We've provided white UV printed optically clear manifestations as per the clients branding requirement. Additionally, dusted dots provide a key safety element required for glass doors and walls.

Individual letters feature on external signs, using high tack vinyl graphics with minimum 1800dpi digital print, for excellent legibility.

