

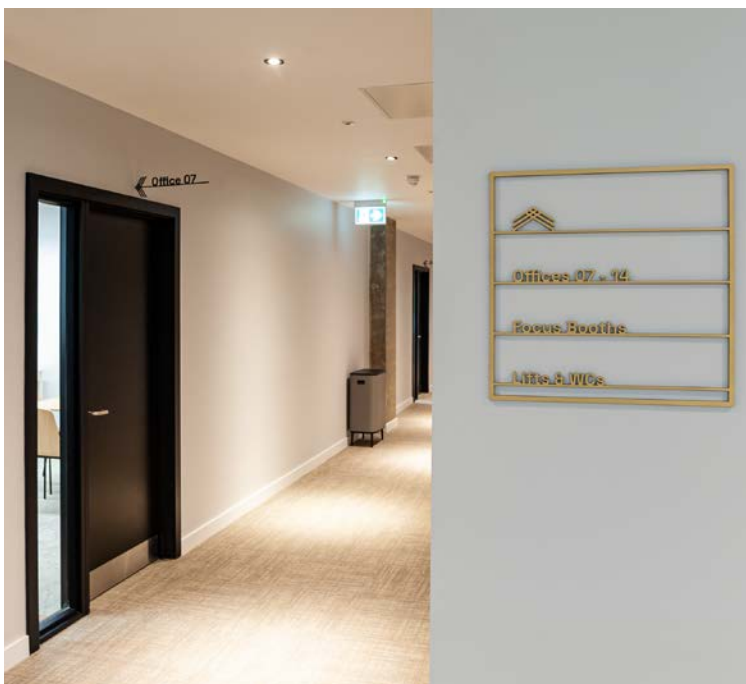
# 10 Brindley Place, Birmingham

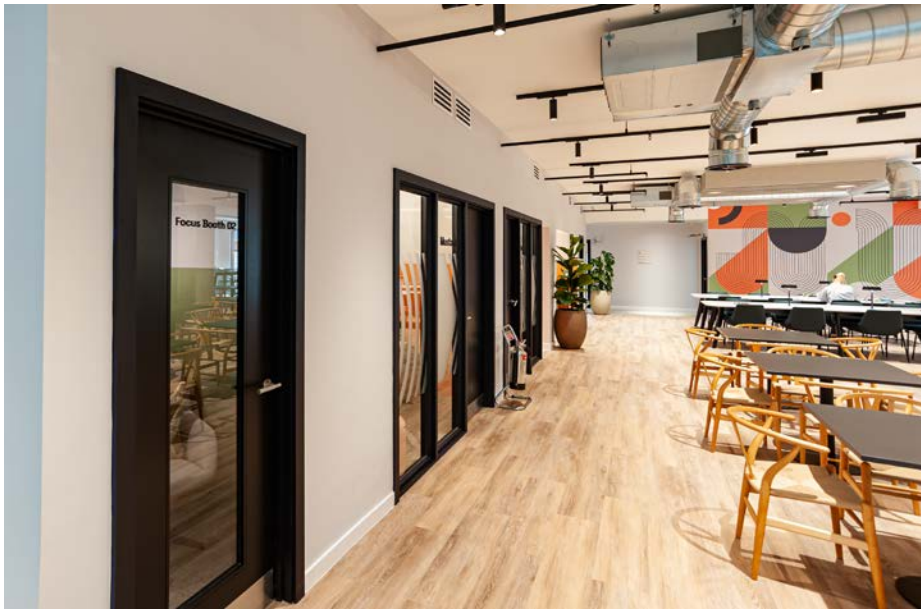
## - Case Study

xsign were appointed to design, manufacture and install the signage scheme for Spacemade, who offer a shared working space at the newly refurbished 10 Brindley Place office space in Central Birmingham.

With a strong brief from the client we have been able to bring to life the branding of the space with a wall-mounted 600mm illuminated rimless face sign, fitted with cool white LEDs and an opal acrylic face.

In the shared spaces, we have provided 3mm thick double sided aluminium projecting signs to provide wayfinding to office rooms; we've also provided 5mm thick brushed brass directory signs with a glass bead blasted edge, and a range of digitally printed high tack profile cut vinyl graphics in the open plan office area.





In the shared office space we have provided super high resolution 1800dpi high tack digitally printed vinyls to brand the working area.

Each office features a 3mm thick double sided aluminium projecting sign which provides wayfinding and navigation for building users.



Throughout the floor level, we have provided glass manifestations to provide branding for the meeting rooms and working areas.