

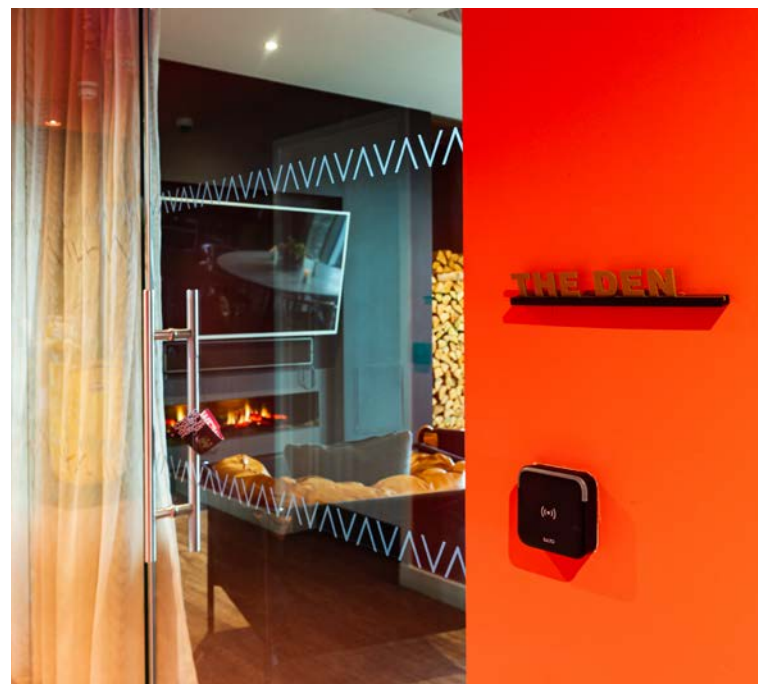
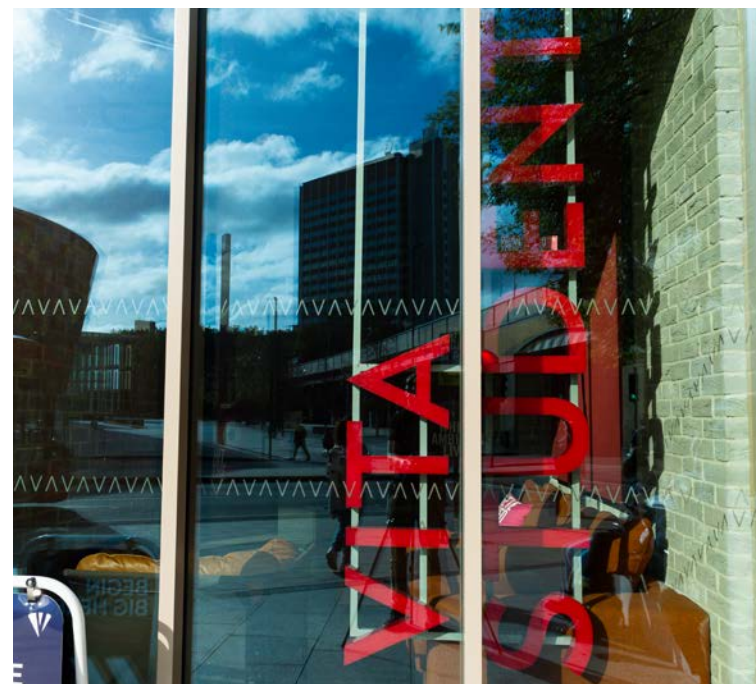
Vita Student, Lewisham

- Case Study

xsign provided the internal and external signage scheme at Vita Student in Lewisham.

Externally, we have provided freestanding, built up, rim and return lettering with face illumination, coated with the VITA brand colours.

Internally, we have provided a suite of directory signs, floor level graphics and room indicators in the branded VITA colours. The internal signage features 3mm frosted lucite panels with high resolution direct digital print for excellent legibility, and strong adhesion for tamper proof text. Stencil cut lettering is used for floor level indication throughout.





Floor level indicators using low tack vinyl graphics help to provide bold wayfinding in the stairwells.

Built up letters provides external branding to the building, featuring the VITA Student brand colours and wall mounted with hidden fixings.



Bespoke letters, fixed on rails provides a high quality finish, suitable for high end residential accommodation.