



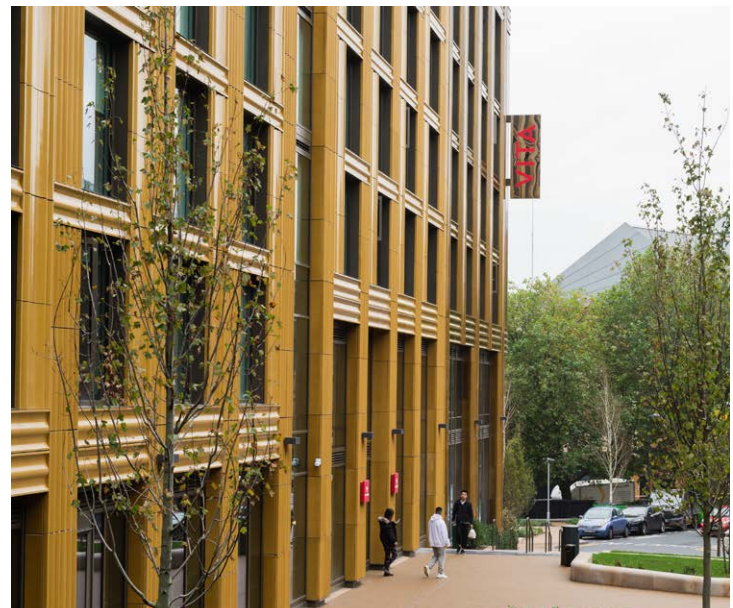
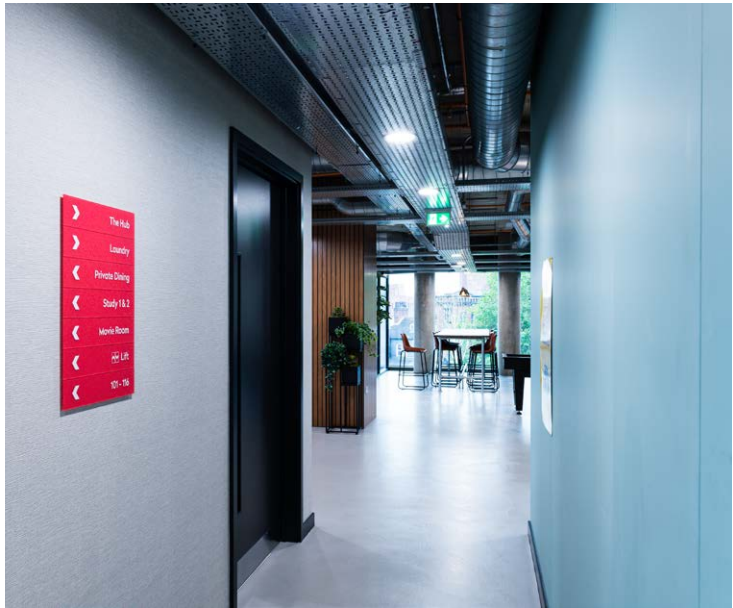
Vita Student St Albans, Leeds

- Case Study

xsign continues its work with Vita Student across the UK, with the completion of the signage installation at the Vita Student St Albans student residential accommodation in Leeds.

The signage package includes internal directory boards to aid wayfinding and navigation and external branding to display the VITA logo.

The internal branding includes our patented Jigsaw panels with 3mm frosted acrylic signs and white high tack graphic vinyls. Externally, we've showcased the best of xsign with a 3.5m, illuminated LED projecting sign, fitted to the external cladding.





The front reception area welcomes visitors with the display of the Vita Student branding with an illuminated aluminium fabricated panel, bespoke colour matched to the Pantone reference, finished with a gloss finish.

The logo is stencil cut, inlaid with acrylic. White LEDs are inlaid to provide illumination to the face.

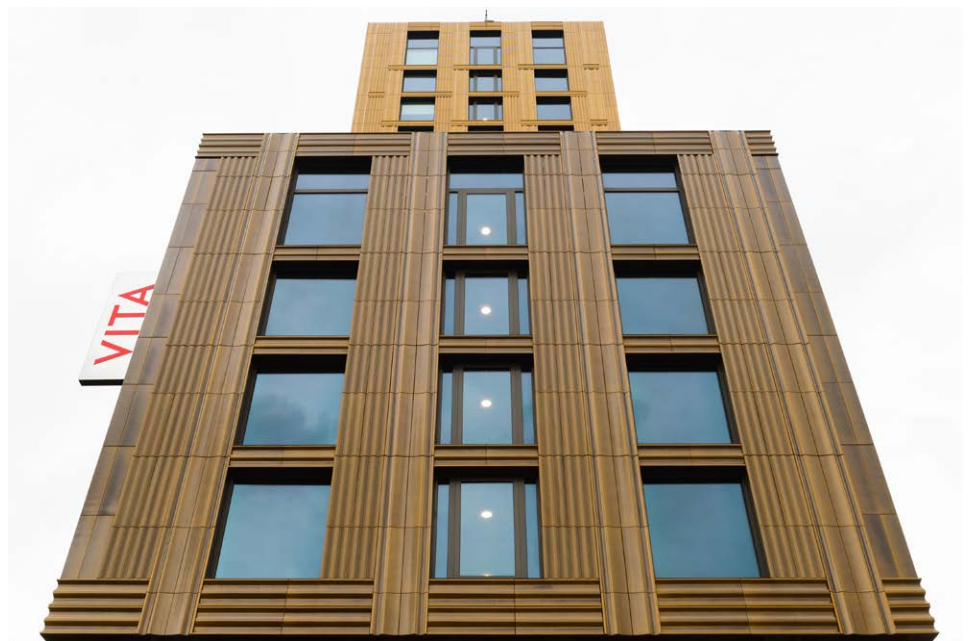
Finally, the sign is flush mounted to the cladding structure to provide a secure fitting.

The challenge in supplying large, external signs is the planning required to fit them.

The VITA illuminated double-sided projecting sign is nearly 3.5m in length, fitted by hoisting it in place with a crane over a dual carriageway.

The sign features mirror polished steel panels with a gloss finish, with a stencil cut inlaid logo detail and LEDs fitted to an electrical supply.

The fabricated framework uses 3 projecting arms to provide a secure fitting to the external cladding.



In the Reception area, profile cut, high tack white vinyl graphics have been applied to offer modern, informative wayfinding for students and staff.

The graphics have been applied to a smooth substrate and offer high contrast visibility.