



Ingleton Wood LLP

- Case Study

xsign provided the internal signage package at Ingleton Wood LLP's new office building at Aldgate. The Architectural practice utilises open office space to create a modern and inspiring work environment.

On entrance to the building, we've installed cut stainless steel letters to depict the Ingleton Wood branding. Around the other spaces, we've used cut letters in italicised font to accentuate the different working environments.

The stainless steel cut letters are 4mm thick marine grade quality with glass bead blasted edge detail. We've also applied a fine brush finish. The sign is fitted using 50mm stud fixings for security.

The internal italic letters are 3mm thick matt black lucite, profile cut with high polish edge and a matt surface finish.





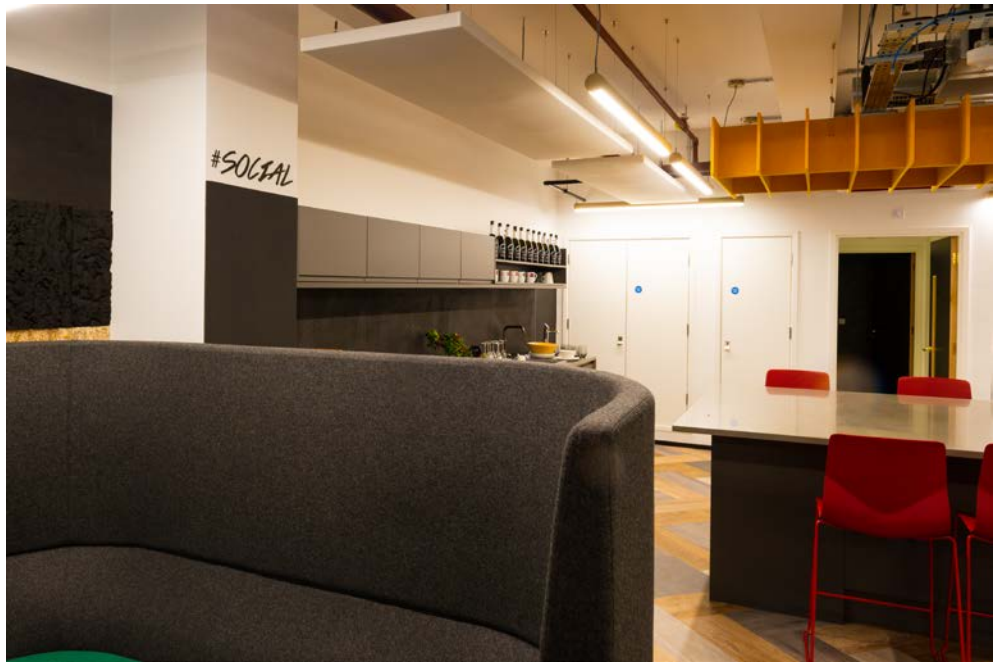
Cut stainless steel lettering is a classic signage material. Used here to reinforce company values, it is striking in appearance and subtle differences in lighting levels and angles gives a matt sheen, slightly reflective finish, that catches the eye.

The 4mm thick marine grade stainless steel sign provides permanence and with longevity.

Senior managers are more aware of the impact the environment of the work place has on productivity and motivation, particularly in creative industries.

Ingleton Wood LLP wanted subtle branding reinforcers to help separate the spaces.

As an architectural practice, their own work place is a feature brochure of the company's capability and their identity.



The 3mm cut letters in special font type-face is fixed directly to the wall with strong adhesive for security.

The Collaborate sign occupies more than 2.5m of wall space.